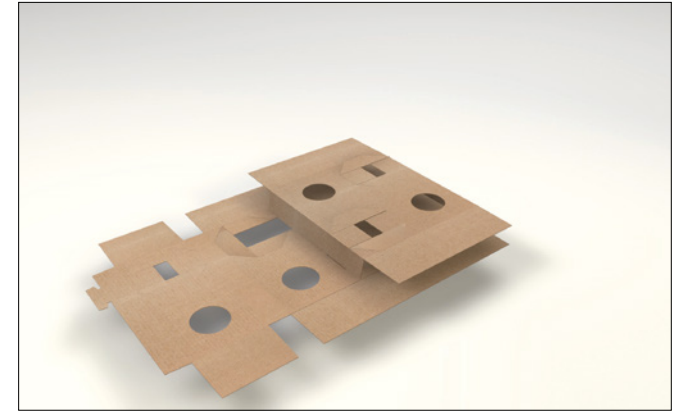
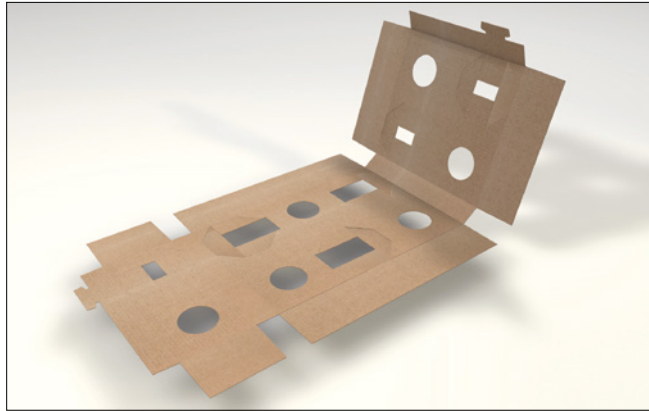
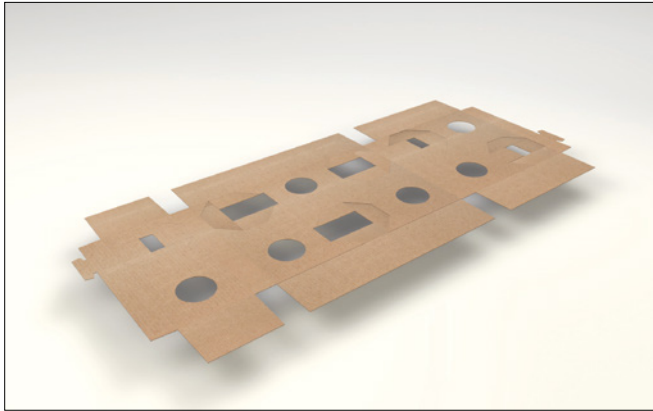
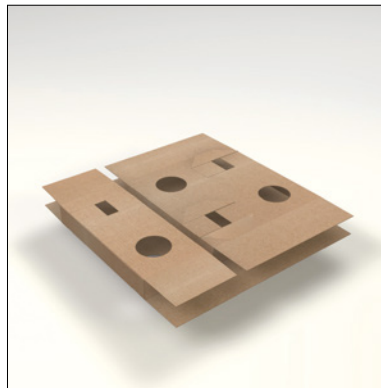
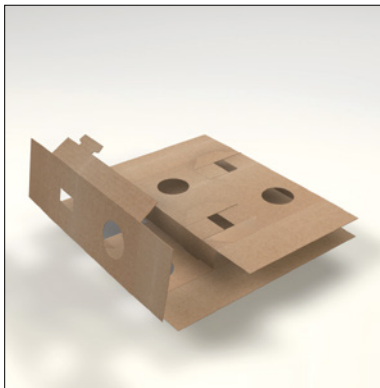


# FirstGlass – PACKAGING DELIVERY SYSTEM

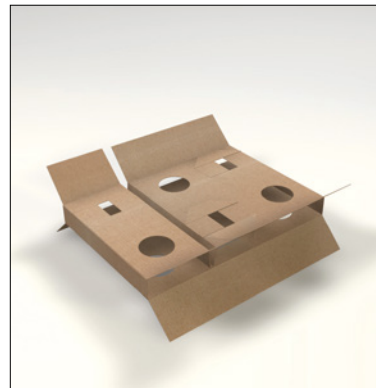
Assembly of inserts is very easy. Below you can find instructions, and tips, which will help You to prepare packaging fast, and in correct way.  
The rules are the same for 6, and 12 bottles packaging.



Step 1: Inserts assembly. Lay insert with plain/smooth part directed into bottom, fold bigger element, and place latch into hole.



Fold shorther part and put in hole to block opening.



Step 2: Fold both bottom wings down.

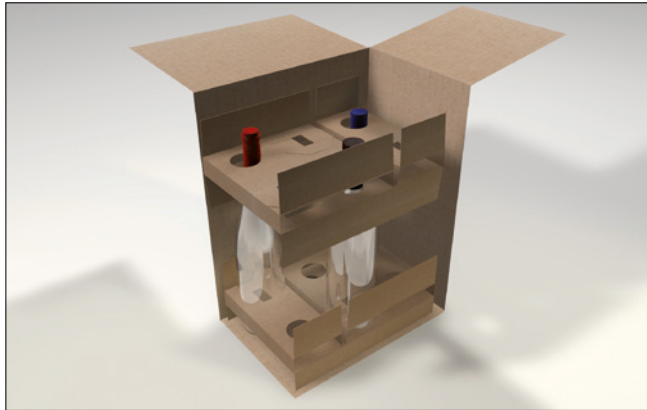


Put insert into box, and press it to the bottom part of box.

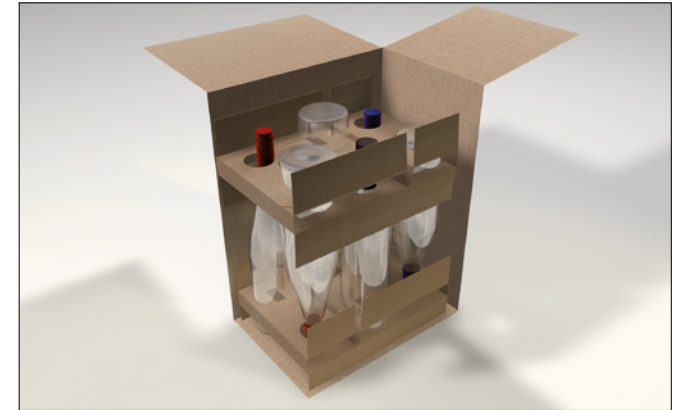




Step 3: Place first bottles into insert bigger holes.



Step 4: Assembly second insert in the same way, place second insert inside carton in a way that small holes fit the bottles neck.



Place remaining bottles with neck down. Ready.



To see assembly animation:  
scan QR code,  
and watch movie.



## Useful tips

Please mind listed below issues:

- Smooth/plain part of insert must be inside.
- After insert assembly, fold wings down.  
Always put insert in box with wings down.
- Place bottom of bottle with slight pressure towards holes inside insert.

For any questions please contact:

**Pario Print Sp. z o.o.**

Al. Jana Pawła II 31/27 • 31-864 Kraków / Poland

Tel .: +48 695 390 889

E-Mail: [jarek@pariopackaging.com](mailto:jarek@pariopackaging.com)

[www.pariopackaging.com](http://www.pariopackaging.com)